

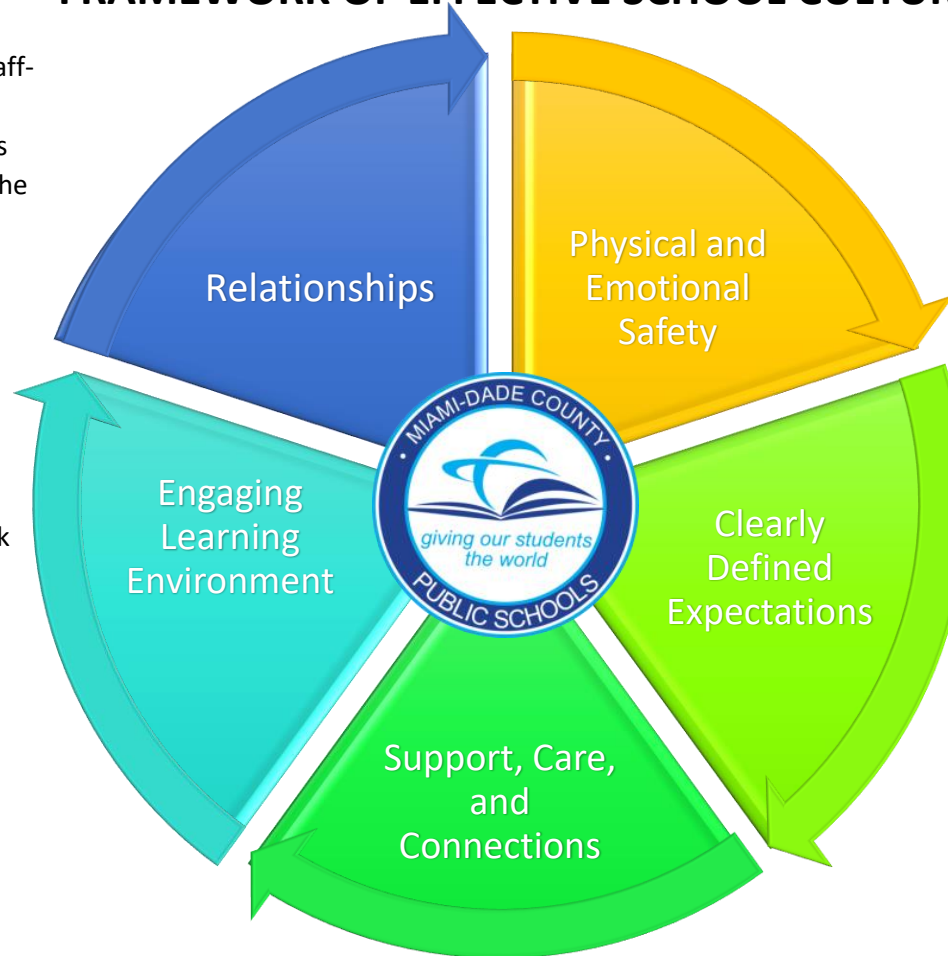
RELATIONSHIPS

- Maintain a pattern of supportive interactions which foster positive staff-student relationships.
- Create meaningful adult connections by encouraging genuine interest in the life, goals, and struggles of students.
- Create positive social support for students through supportive peer relationships.
- Host activities that foster the development of trusting and caring relationships.
- Create protocols which allow for honest communication and feedback amongst all stakeholders.
- Foster professional relationships between school staff that support effective collaboration.

ENGAGING LEARNING ENVIRONMENT

- Create a cognitively stimulating physical school environment that informs and engages students.
- Model and nurture attitudes that emphasize the benefits of learning.
- Engage staff and students in the care of the physical environment.
- Encourage school pride.
- Celebrate success of students and staff by emphasizing accomplishments and collaboration.
- Foster high expectations through the use of a growth mindset.
- Connect student's life goals to educational opportunities.
- Maintain clean, orderly and appealing physical surrounding.

FRAMEWORK OF EFFECTIVE SCHOOL CULTURE



SUPPORT, CARE AND CONNECTIONS

- Provide ongoing support for the development of a safe and supportive school environment.
- Encourage family and community participation and engagement with the school.
- Assist students in connecting with resources available to support their physical and emotional challenges.
- Ensure that school leadership is accessible and supportive of school staff.
- Ensure adults are modeling expected behaviors.
- Integrate social and emotional skills into academic instruction.
- Establish protocols that encourage a welcoming classroom environment.

PHYSICAL AND EMOTIONAL SAFETY

- Create norms, values, and expectations that support social, emotional, and physical safety.
- Create an environment where everyone feels safe and comfortable sharing thoughts and ideas.
- Encourage mutual respect for individual differences and promote tolerance and inclusivity.
- Ensure that students and parents understand safety protocols established to support their physical safety.
- Address bullying, harassment, and intolerance swiftly.
- Enforce protocols which ensure safe and hazard free physical surrounding.
- Establish an environment where students feel safe from physical harm, teasing, gossip and exclusion in school and through social media.

CLEARLY DEFINED EXPECTATIONS

- Create positive rules that support healthy interactions.
- Clearly communicate rules, norms, and enforcement of such.
- Establish a shared school vision with all stakeholders.
- Communicate and monitor practices to ensure alignment with shared vision.
- Ensure that addressing the social emotional wellness of students is a school priority.
- Enforce school policies in an equitable manner.